

## SpeechMotion is the State-of-the-Art Solution for Modern Healthcare

### **Modern healthcare demands flexible, affordable and advanced technology options**

Today's physician is bombarded with developments in technology almost daily, from advancements in medical devices, to new medications, to the adoption of ICD-10 and Meaningful Use compliance. To keep pace with today's ever changing and evolving healthcare environment, physicians must work with products and solutions that provide them with speed and agility to keep pace with the increasing demands of patient care.

When investigating new technology solutions, healthcare officials must not only consider the promises of the technology, but also the needs of the physicians who will use the technology. Healthcare technology solutions must be simple, straightforward and practical. They must be flexible and minimally invasive for the physician if they are to be successfully deployed.

They must plug-in and adapt to existing workflows, rather than forcing change.

Most importantly, technology solutions must provide a return on investment. To ensure a return on an investment, technology must meet the demands of as many physicians and end-users as possible, meeting the needs of multiple specialties and various types of patient encounters. Technology must be user-friendly, simple to support, and easy to install to avoid costly support contracts and maintenance.

The entire SpeechMotion suite of products is designed to meet the needs of all physicians, both today and tomorrow. Our suite of products provides options, like front-end and back-end speech recognition, an important consideration with the migration to ICD-10, which will require greater specificity and increases in documentation. Our unique pricing structure, based entirely on usage, maximizes your return on investment by consolidating multiple software products and documentation options under one, cost-effective umbrella.

## Complete Solution

Modern healthcare demands the options provided by SpeechMotion

### 1. EMRDirect

SpeechMotion EMRDirect is a flexible speech recognition front-end solution that enables physicians to dictate directly into an EMR.

### 2. MDDirect

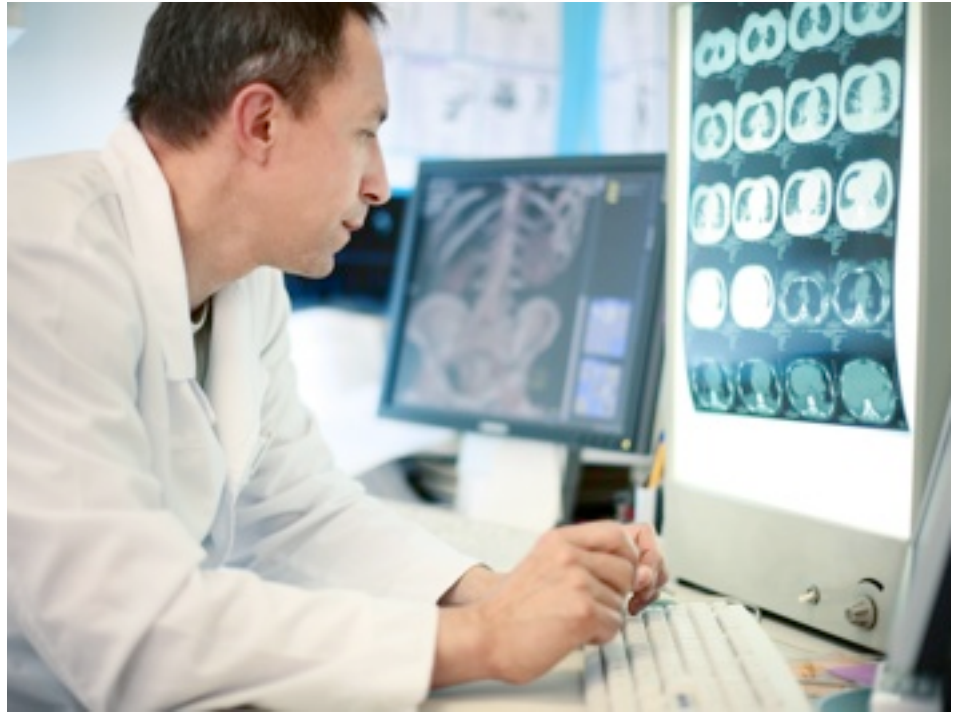
Also a front-end speech recognition solution, SpeechMotion MDDirect provides physicians with enhanced capabilities, including alerts and structured data encoding.

### 3. Enterprise Solution

A comprehensive documentation platform, the SpeechMotion Enterprise Solution provides back-end speech recognition and robust workflow options that reduce costs and improve efficiencies.

### 4. Data Interoperability

SpeechMotion customers may utilize our value-added document product to automatically import data to an EMR or for clinical reporting needs, providing a longevity to documents never seen before.



## Cloud-Based for Modern Efficiencies

Today's physician is mobile, moving from the hospital, to the clinic, to the office, meeting a variety of patients every day. He needs real-time solutions that can keep up without slowing him down. Cloud-based software, like SpeechMotion, are becoming increasingly popular for physicians because they can take their solutions with them anywhere.

Residing 'in the cloud' means the software is installed on servers hosted by the software provider. Healthcare organizations choosing SpeechMotion are not required to support or maintain expensive hardware on-site. Software in the cloud is accessible from within the healthcare organization, and can easily be made accessible externally, too, giving users the ability to access the software from anywhere - even from home.

Cloud-based software is a modern approach to software delivery. SpeechMotion has been a cloud-based solution for over a decade, providing users the solutions they need to keep pace with the ever-evolving world of healthcare.

## Flexible Front-End Speech Recognition

SpeechMotion EMRDirect provides physicians with what they have lacked with other front-end voice recognition solutions - freedom. No longer are physicians tethered to a specific computer to use their front-end speech recognition product. With SpeechMotion, users can travel from the hospital, to their office, and even to home. Just a simple installation and physicians are ready to take advantage of SpeechMotion's advanced speech recognition technology.

Our cloud-based technology allows physicians the flexibility to log into any computer or laptop and dictate immediately. Updates and configuration changes are downloaded upon login straight from the cloud, so if the physician makes configuration changes at the hospital, like adding a new word to his personal dictionary, those changes will be waiting when he logs in at home.

Healthcare organizations using the entire SpeechMotion product suite can take immediate advantage of fully trained front-end voice profiles. Our back-end speech recognition solution trains a unique profile for every single physician. This profile is accessible via our front-end solution. Your physicians do not have to train the system. Instead, the back-end editing performed by medical transcriptionists trains and fine-tunes the system, often within a few days. With EMRDirect, your physicians can begin dictating immediately with unsurpassed recognition results.

## Subscription Fee

SpeechMotion's front-end speech recognition solution is charged on a subscription-based pricing structure. Subscriptions run month-to-month, so subscriptions are simple to add or eliminate, as needed.



## MDDirect: A Smarter Front-End Solution

For some physicians, a traditional front-end speech recognition product is not a suitable method of dictation. Some physicians may struggle with the technology or find that they are not a candidate for traditional front-end recognition. Other physicians may find that front-end speech recognition works well with some dictation, but slows them down with other dictation types.

In addition to EMRDirect, SpeechMotion provides a more flexible and robust front-end product. MDDirect is a cloud-based speech recognition solution that happens in real-time. For physicians who struggle with traditional front-end speech recognition, the power of our cloud-based solution may be an alternative.

In addition to smarter and stronger speech recognition, MDDirect also provides structured and encoded clinical data that can be used in the care process for a variety of purposes. MDDirect can alert the physician to missing data elements, ensuring complete and accurate documents in the dictation process. MDDirect is a smarter front-end solution for physicians or patient encounters requiring something more than traditional front-end recognition.

---

## Enterprise: A Complete Platform

The SpeechMotion Enterprise Platform is a complete documentation solution encompassing back-end speech recognition, voice management, statistical reporting, flexible distribution options, e-signature, and traditional transcription. Designed for flexibility, SpeechMotion customizes to your existing workflow, rather than disturbing it, minimizing the need for change to improve adoption rates and streamline implementation.

The back-end speech recognition solution provided by SpeechMotion Enterprise is transparent to the physician, requiring no training or change in dictation habits. Customers have the ability to turn the back-end speech recognition on or off at will, giving customers total control over utilization. Automated learning built into the back-end technology uniquely adapts to each physician, improving results over time.

A simple and easy to install web-based solution, SpeechMotion Enterprise has minimal hardware requirements and is accessible from anywhere - the hospital, clinic, even from home. Customers select SpeechMotion Enterprise as a total solution, meeting their needs today, and evolving to meet their needs tomorrow.

## Cloud Benefits

Cloud technologies provide flexibility and freedom - what modern healthcare providers want

### 1. No Capital Required

Since SpeechMotion is hosted in the cloud, there are no capital expenditures, like servers or hardware, required.

### 2. Eliminate Support

There is no software or equipment to maintain on-site, eliminating internal support.

### 3. Flexibility

SpeechMotion is designed for flexibility, making changes or additions simple and easy to implement.

### 4. Unified Technology

Technology stored in the cloud is unified, making the same technology accessible to all users, regardless of location.

## Cost-Effective

Regardless of which solution you select, SpeechMotion customers are charged a simple per-line fee. Training, support and maintenance are always provided free of charge, making SpeechMotion a very cost-effective choice for modern healthcare.

SpeechMotion provides many flexible options for healthcare facilities of all sizes

Front-End Speech Recognition	No Licensing or Upgrade Fees	Complete Audit Trail
Statistical Reporting	Smartphone Dictation	e-Signature
Automated Alerts	Automated Faxing	HL7 Upload
Document and Voice Archive	Back-End Speech Recognition	Centralized Management Tools
Web-Portal Access	Scheduled Printing	Clinical Documentation Architecture (CDA) Delivery

## A Single Solution for Multiple Uses

### One Solution Fits the Unique Needs of Every Patient Encounter

SpeechMotion provides physicians with what they want most - freedom to make choices. Physicians using SpeechMotion can select their preferred documentation method based on the visit type or the complexity of the patient's story. Regardless of whether they select front-end speech recognition, back-end speech recognition, traditional transcription, or keyboard input, the physician can select the quickest, most efficient documentation method under the circumstances. When all of those solutions are provided under the same umbrella, there is no need to log out and in, no support or maintenance of various products, and no interruption to the physician's activity.



## Information

### About SpeechMotion

SpeechMotion™ is a state-of-the-art voice capture, speech recognition, distribution and e-signature application platform for healthcare documentation. As a Software-as-a-Service (SaaS) solution, SpeechMotion is flexible, reliable and budget friendly.

### Contact

To learn how SpeechMotion can assist your organization in meeting your strategic goals, like Meaningful Use compliance and ICD-10 adoption, while reducing costs and streamlining documentation, visit [www.speechmotion.com](http://www.speechmotion.com).

vChart, LLC.  
6430 East 75th Street  
Indianapolis, IN 46250  
800-467-7474  
[www.speechmotion.com](http://www.speechmotion.com)



Scan me to find out what's new with SpeechMotion!

### Cost-Effective to Ensure a Return on Investment

With sky rocketing costs and forthcoming changes to reimbursements with the switch to ICD-10, healthcare providers today need to select technology solutions that ensure a high return on investment. Selecting one affordable product that encompasses many alternatives can save a healthcare facility money in searching and testing other alternatives. Dealing with one technology solution, rather than many, consolidates and simplifies support, maintenance and training.

SpeechMotion never charges training, support or maintenance fees. With our line-based pricing structure, costs are simple to track and measure, making a return on investment simple to realize.

### The Only Choice for Modern Healthcare

Healthcare is a fast-paced, ever-evolving environment that requires solutions and products that can keep up with the growing demand of patient care. Physicians and health administrators need products and solutions that support this environment, giving them the freedom to select the most appropriate options, given the circumstances of every unique patient encounter. No two patient stories are alike, and SpeechMotion provides the flexibility and choices to adapt to the unique needs of every patient. Everything you need under one umbrella - the only choice for today's modern healthcare facility.

